

South of Kern River Executive Committee Special Meeting

Friday, May 22, 2026

12:30 p.m. to 2:00 p.m.

Meeting Information Posted:

www.sokrgsp.com

<http://www.aewsd.org> * <http://www.wrmwsd.com>

<http://www.tejoncastacwd.com> * <https://www.arvincsd.com>

In Person: Arvin-Edison Water Storage District Headquarters
20401 E. Bear Mountain Blvd. Arvin, CA 93203

Via Remote (**Microsoft Teams**): <https://www.microsoft.com/microsoft-teams/join-a-meeting>

Click here to join the meeting

Meeting Number: **244 668 249 653 95**

Meeting Password: **hi2im9Dj**

Phone: **1.213.437.9052**

Phone Meeting Number (access code): **395 321 113#**

NOTICE: Members of the public interested in participating by teleconference may do so using the call-in information above or by following [this link](#). Please note that this teleconference option is provided as a courtesy and at the participant's own risk. The Committee cannot guarantee that there will be no loss of connectivity or other technological obstacle to full participation through teleconferencing. By participating in this way, participants confirm that they understand this risk and that the Committee is not obliged to delay any portion of the meeting due to such technological obstacles and thus that teleconference participants may be unable to participate.

1. CALL TO ORDER
2. ROLL CALL
3. PLEDGE OF ALLEGIANCE
4. APPROVAL OF THE AGENDA
5. APPROVAL OF FEBRUARY 12, 2026 MEETING MINUTES
6. PUBLIC COMMENT
7. REPORT ITEMS
 - a. GSP Manager Report (*Muhar*)
 - i. Basin Coordination
 - ii. Outreach and Engagement
 - b. Technical Consultant Report (*EKI*)
 - i. Summary of Kern County Subbasin Water Year 2025 Annual Report
 - ii. SGMA Monitoring Network performance and sustainable management criteria (SMC) compliance

- iii. Subsidence subcommittee recommended changes to Exceedance Policy
- iv. Updates on coordinated Water Quality Program Administration
- c. Finance Report (*Nicholas*)
- d. California Aqueduct Subsidence Program (CASP) update (*Nicholas*)
- e. Management Area updates (*Muhar, Nicholas, Martin, Barraza*)

8. ACTION ITEMS

- a. Discuss and consider endorsement of and ratification to GSA home boards for funding of up to \$14,018 per GSA for cost share agreement 26-02 to cover subbasin-wide expenses for land subsidence subcommittee and Projects/Management Actions work efforts through 2026.

9. CLOSED SESSION

- a. Potential Litigation (Government Code §54956.9(d)(2), (e)(1); 1 item).

10. ADJOURNMENT

**MINUTES OF THE MEETING OF THE
SOUTH OF KERN RIVER EXECUTIVE COMMITTEE**

February 12, 2026

CALL TO ORDER

Director Yurosek called the meeting to order at 9:01 a.m., and determined a quorum was present with attendance by:

Executive Committee Directors

Derek Yurosek – Arvin-Edison Water Storage District (AEWSD; Arvin GSA) (present)
Mark Valpredo – Tejon-Castac Water District (TCWD; Tejon-Castac Water District GSA) (present)
Michael Blaine – Wheeler Ridge-Maricopa Water Storage District (WRMWSO; Wheeler Ridge-Maricopa GSA) (present)
Rafael Gallardo – Arvin Community Services District (ACSD) (present)

District Staff

Jeevan Muhar – AEWSD (present)
Sheridan Nicholas – WRMWSO (present)
Angelica Martin – TCWD (absent)
Raul Barazza – ACSD (present)

PLEDGE OF ALLEGIANCE

APPROVAL OF THE AGENDA

Director Gallardo moved to approve the agenda. The motion was seconded by Director Valpredo. The motion passed 4-0-0.

APPROVAL OF NOVEMBER 20, 2025 MEETING MINUTES

Director Gallardo moved to approve the November 20, 2025, SOKR Executive Committee meeting minutes. Director Blaine seconded. The motion passed 4-0-0.

PUBLIC COMMENT

There were no public comments.

REPORT ITEMS

GSP Manager Report

Basin Coordination

Mr. Muhar reported that that Subbasin GSAs are working to prepare the Annual Report, fill data gaps, and complete annual form and templates. Additionally, Mr. Muhar reported that the Subbasin representatives met with California Department of Water Resources (DWR) staff who are reviewing the 2025 GSP.

Technical Consultant Report

EKI reported on the SGMA Monitoring Network performance and SMC compliance. Additionally, EKI reported on updates on DWR's final Land Subsidence Best Management Practices and noted that recommendations regarding how the BMPs should be addressed in the Subbasin's program would be presented at the next Executive Committee meeting. Lastly, EKI reported on the DWR meeting regarding the 2025 GSP overview and noted that questions were raised concerning the quantification of projects and management actions.

Finance Report

Mr. Nicholas reported on finances to date. The Financial Report included GSP development efforts, technical consultant fees, legal expenses, and a cash call refund request. All costs are shared equally between SOKR entities. No action was needed on SOKR finances.

California Aqueduct Subsidence Program (CASP) update

Mr. Nicholas reported on the December 2025 meeting with CASP. The subsidence subcommittee is scheduled to next meet with CASP in March 2026.

Management Area updates

Mr. Muhar reported that SGMA continues to be a top priority for Arvin GSA, and reported on the following SGMA-related projects: (1) the purchase of 60 acres in White Wolf close to the fault to support recharge, (2) the issuance of a contract for Frick unit work; and (3) the completion of the North Canal Spreading Works expansion.

Mr. Nicholas reported that the WRM GSA continues to investigate the impact of the groundwater service charge on cropping changes across the GSA.

Mr. Barazza reported that ACSD is two meetings away from a finalized project.

There were no TCWD GSA-specific updates to report.

Correspondence

The Directors noted the following correspondence:

- a. State Water Resources Control Board letter dated 8 December 2025
"Returning the Kern County Subbasin to the Jurisdiction of the Department

of Water Resources under the Sustainable Groundwater Management Act”

CLOSED SESSION

Potential Litigation (Government Code §54956.9(d)(2), (e)(1); 1 item).

RETURN TO OPEN SESSION

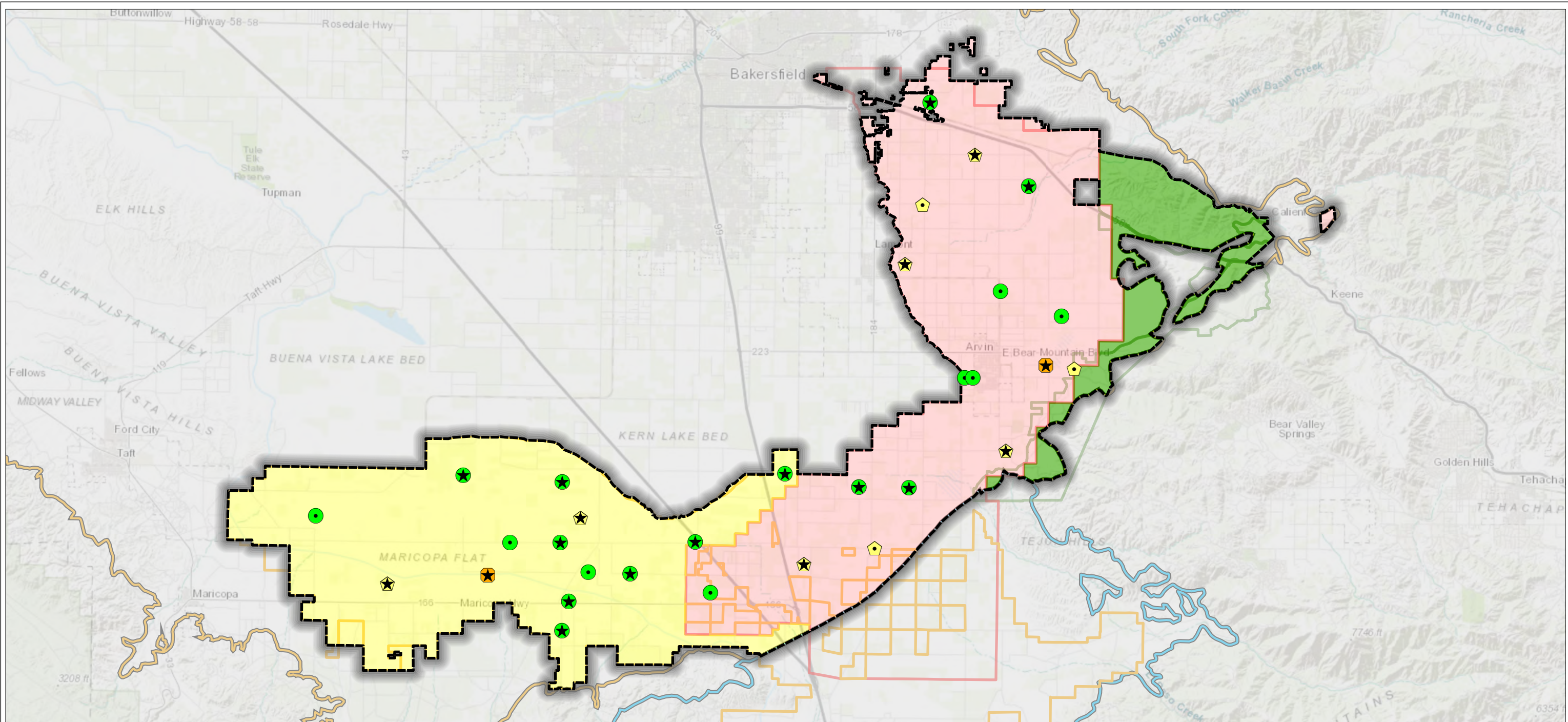
There was nothing to report out of the closed session.

The next SOKR Executive Committee Meeting is scheduled for May 22, 2026 at 12:30 p.m.

ADJOURNMENT

Director Yurosek adjourned the SOKR Executive Committee meeting at 10:13 a.m.

Mark Valpredo, South of Kern River
Executive Committee Secretary



Legend

Representative Monitoring Well and Status as of February 2026

- Water Level Above MO (20 or 65%)
- ⬠ Water Level Between MO and MT but closer to MO (9 or 29%)
- Water Level Between MO and MT but closer to MT (2 or 6%)
- ▲ Water Level Below MT (0)
- No Water Level Measurement (0)

- South of Kern River GSAs
- Arvin GSA
- Wheeler Ridge-Maricopa GSA
- Tejon-Castac Water District GSA
- WRMWSA Service Area
- AEWSD Service Area
- TCWD Service Area

- Groundwater Subbasin**
- Kern County (DWR 5-022.14)
 - White Wolf (DWR 5-022.18)
 - ★ Transducer Installed

Abbreviations

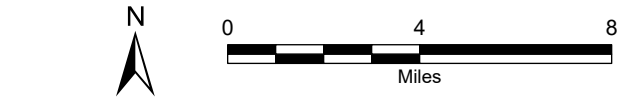
- AEWSD = Arvin-Edison Water Storage District
- DWR = California Department of Water Resources
- GSA = Groundwater Sustainability Agency
- MO = Measurable Objective
- MT = Minimum Threshold
- RMW = Representative Monitoring Well
- SGMA = Sustainable Groundwater Management Act
- SMC = Sustainable Management Criteria
- TCWD = Tejon-Castac Water District
- UR = Undesirable Result
- WRMWSA = Wheeler Ridge-Maricopa Water Storage District

Notes

1. All locations are approximate.
2. Status is based on the SMCs in the 2025 Kern County Subbasin Groundwater Sustainability Plan
3. Undesirable Results are deemed to occur if (1) more than 15 drinking water wells within the Subbasin are reported as dry in any given year, or (2) groundwater levels in 25% or more RMWs are below their respective MT over a single year (two consecutive seasonal measurements).

Sources

1. Basemap is ESRI's ArcGIS Online world topographic map, obtained 4 March 2026.
2. GSA boundaries obtained from SGMA GSA Map Viewer portal, accessed 6 May 2022.
3. DWR groundwater basins are based on the boundaries defined in California's Groundwater Bulletin 118 - 2019 Update.

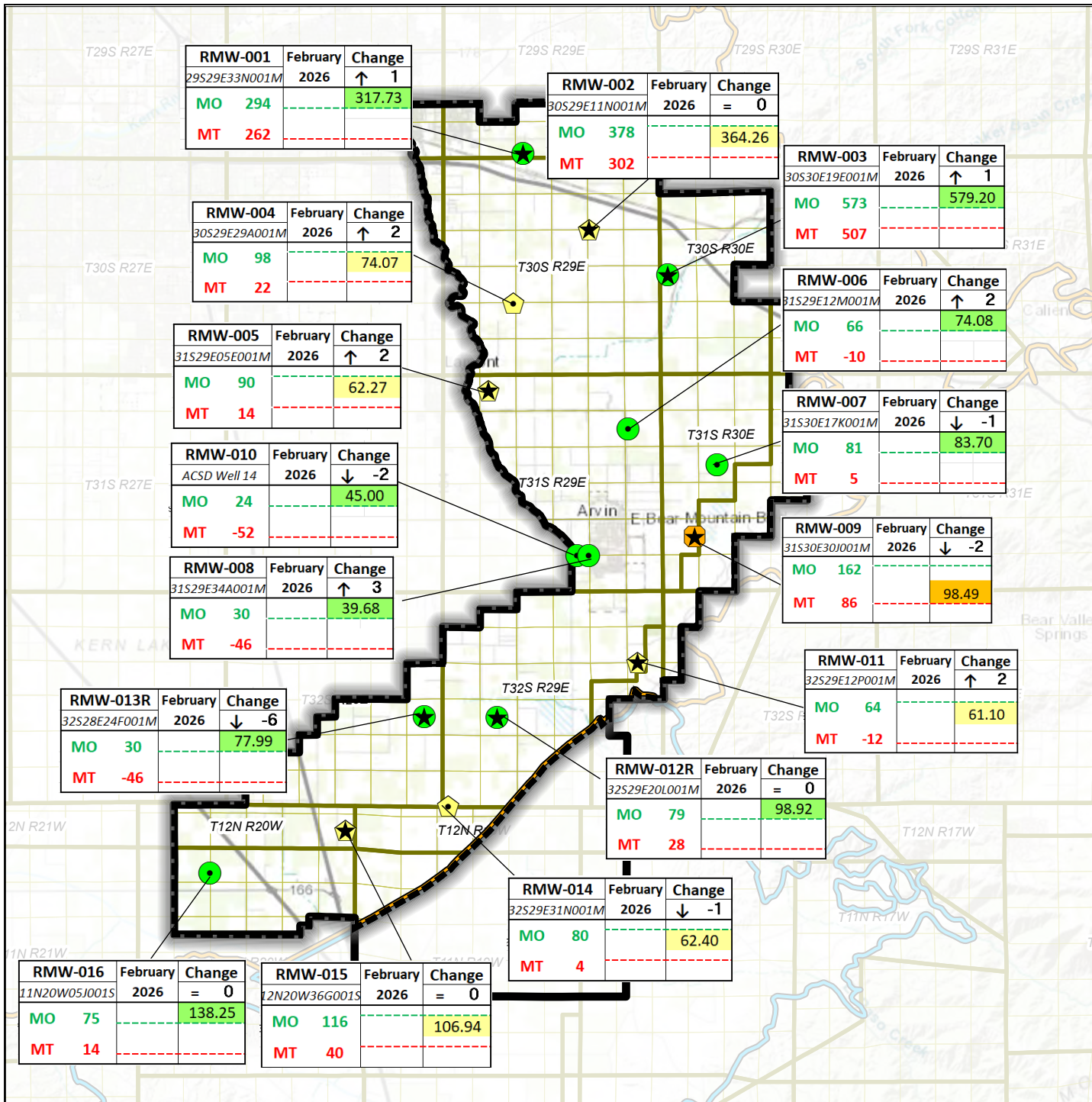


February 2026 Water Levels Relative to SMCs

South of Kern River GSAs
 Kern County, CA
 February 2026
 C20055.00
Figure 1



Path: X:\C20055.00\Maps\2026\02\February_2026.aprx



Legend

Representative Monitoring Well and Status as of February 2026

- Water Level Above MO (9 or 56%)
- ⬠ Water Level Between MO and MT but closer to MO (6 or 38%)
- ⬠ Water Level Between MO and MT but closer to MT (1 or 6%)
- ▲ Water Level Below MT (0)
- ⬠ No Water Level Measurement (0)
- 🏠 Arvin GSA
- 🗺️ Arvin-Edison Water Storage District
- 📍 **Groundwater Subbasin**
- 📍 Kern County (DWR 5-022.14)
- 📍 White Wolf (DWR 5-022.18)
- ★ Transducer Installed

Abbreviations

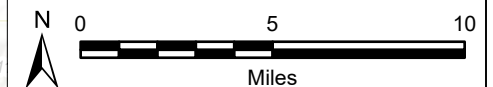
- ACSD = Arvin Community Services District
- DWR = California Department of Water Resources
- ft msl = feet above mean sea level
- GSA = Groundwater Sustainability Agency
- MO = Measurable Objective
- MT = Minimum Threshold
- RMW = Representative Monitoring Well
- SMC = Sustainable Management Criteria

Notes

1. All locations are approximate.
2. Groundwater elevations reported in units of ft msl.
3. All water levels collected during February 2026.
4. Arrow direction indicates water level change from previous month.
5. Status is based on the SMCs in the 2025 Kern County Subbasin Groundwater Sustainability Plan.
6. Undesirable Results are deemed to occur if (1) more than 15 drinking water wells within the Subbasin are reported as dry in any given year, or (2) groundwater levels in 25% or more RMWs are below their respective MT over a single year (two consecutive seasonal measurements).

Sources

1. Basemap is ESRI's ArcGIS Online world topographic map, obtained 4 March 2026.

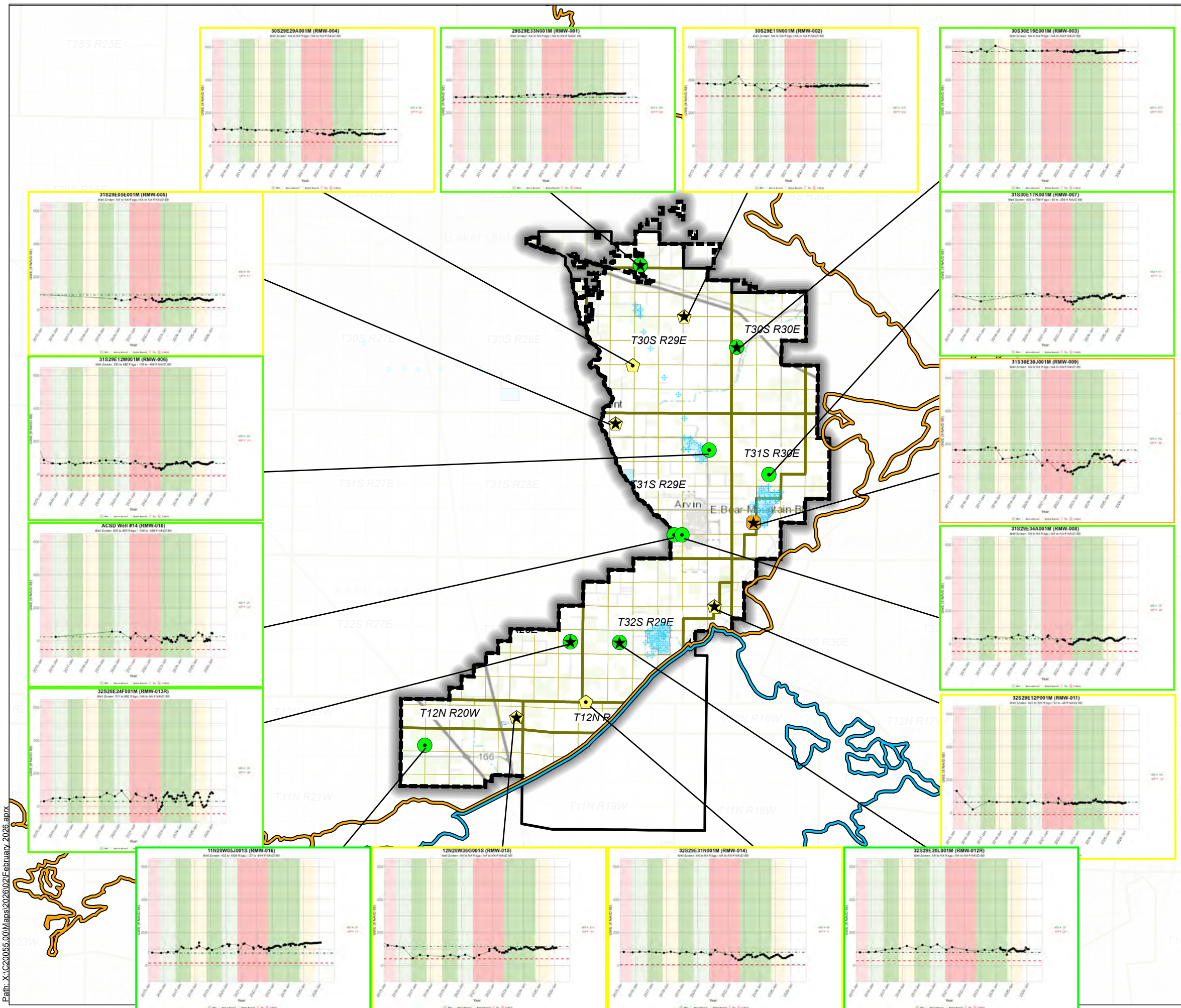


Groundwater Levels Relative to SMCs February 2026 Arvin GSA

Arvin-Edison Water Storage District
Kern County, California
February 2026
B60064.10



Figure 2



Legend

Representative Monitoring Well and Status as of February 2026

- Water Level Above MO (9 or 56%)
- ⬠ Water Level Between MO and MT but closer to MO (6 or 38%)
- ⬠ Water Level Between MO and MT but closer to MT (1 or 6%)
- ▲ Water Level Below MT (0)
- ⬠ No Water Level Measurement (0)
- ▭ Arvin-Edison Water Storage District
- ▭ Arvin GSA

Groundwater Subbasin

- ▭ Kern County (DWR 5-022.14)
- ▭ White Wolf (DWR 5-022.18)
- ★ Transducer Installed

Abbreviations

AEWSD = Arvin-Edison Water Storage District
 DWR = California Department of Water Resources
 ft msl = feet above mean sea level
 GWE = groundwater elevation
 MO = measurable objective
 MT = minimum threshold
 RMW = Representative Monitoring Well

- Notes**
- All locations are approximate.
 - Groundwater elevations are in feet mean sea level.
 - Status is based on the SMCs in the 2025 Kern County Subbasin Groundwater Sustainability Plan.
 - Undesirable Results are deemed to occur if (1) more than 15 drinking water wells within the Subbasin are reported as dry in any given year, or (2) groundwater levels in 25% or more RMWs are below their respective MT over a single year (two consecutive seasonal measurements).
 - All RMW status based on February 2026 measurements.

Sources

- Basemap is ESRI's ArcGIS Online world topographic map, obtained 4 March 2026.
- Water level information obtained from AEWSD.



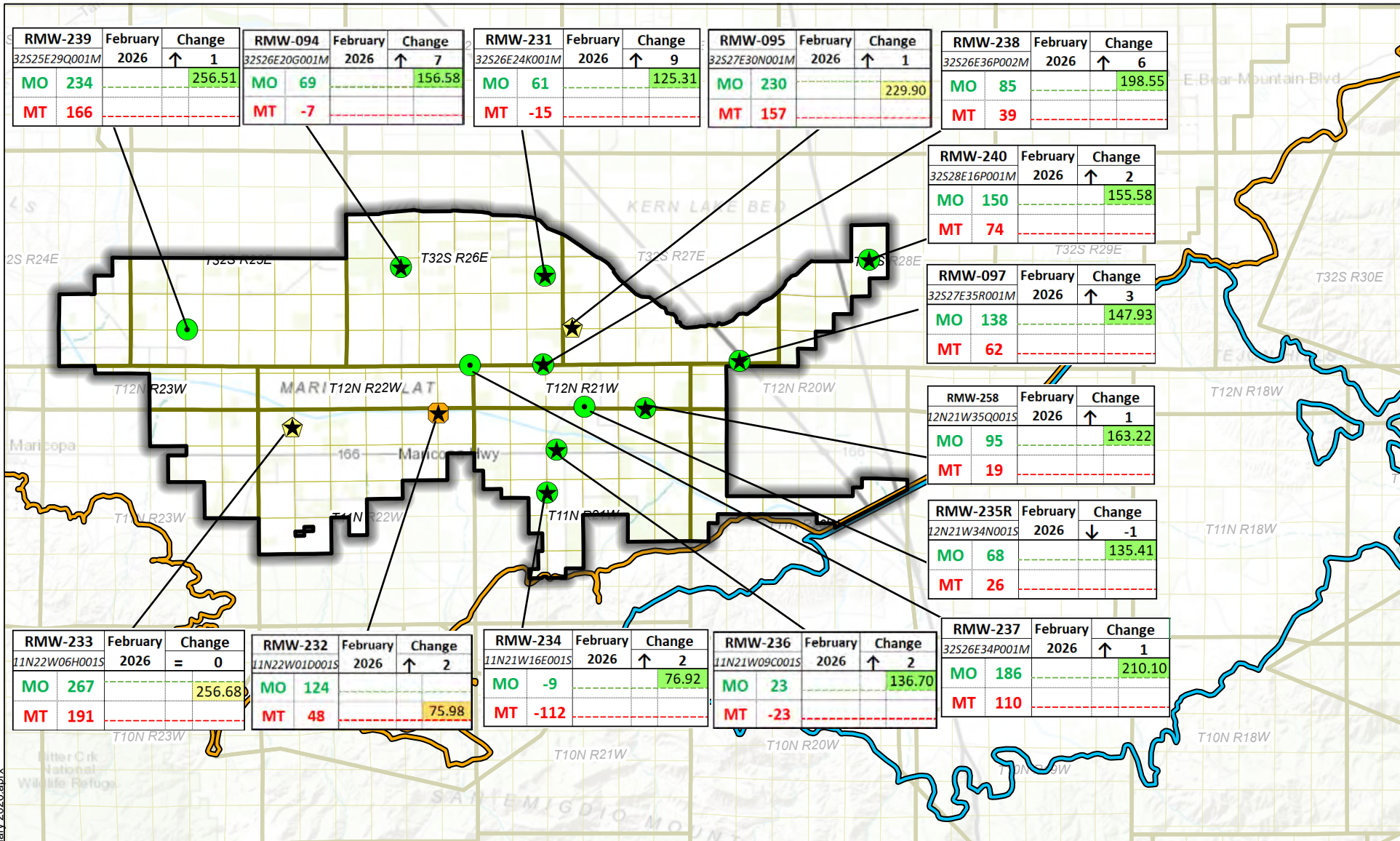
DRAFT

Hydrographs in Representative Monitoring Wells (January 2015 - February 2026)

Arvin-Edison Water Storage District
 Kern County, CA
 February 2026
 C20055.01
Figure 3

eki environment & water

Path: X:\C20055_01\Maps\2026\02\February_2026.aprx



Path: X:\C20055_00\Maps\2026\02February_2026.aprx

Legend

Representative Monitoring Well and Status as of February 2026

- Water Level Above MO (11 or 79%)
- Water Level Between MO and MT but closer to MO (2 or 14%)
- Water Level Between MO and MT but closer to MT (1 or 7%)
- Water Level Below MT (0)
- No Water Level Measurement (0)

Groundwater Subbasin

- Kern County (DWR 5-022.14)
- White Wolf (DWR 5-022.18)
- Wheeler Ridge-Maricopa GSA
- ★ Transducer Installed

Notes

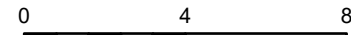
1. All locations are approximate.
2. Groundwater elevations reported in units of ft msl.
3. All water levels collected during February 2026.
4. Arrow direction indicates water level change from previous month.
5. Status is based on the SMCs in the 2025 Kern County Subbasin Groundwater Sustainability Plan.
6. Undesirable Results are deemed to occur if (1) more than 15 drinking water wells within the Subbasin are reported as dry in any given year, or (2) groundwater levels in 25% or more RMWs are below their respective MT over a single year (two consecutive seasonal measurements).

Sources

1. Basemap is ESRI's ArcGIS Online world topographic map, obtained 4 March 2026.

Abbreviations

- DWR = California Department of Water Resources
- ft msl = feet above mean sea level
- GSA = Groundwater Sustainability Agency
- MO = Measurable Objective
- MT = Minimum Threshold
- SMC = Sustainable Management Criteria



(Scale in Miles)

Groundwater Levels Relative to SMCs February 2026

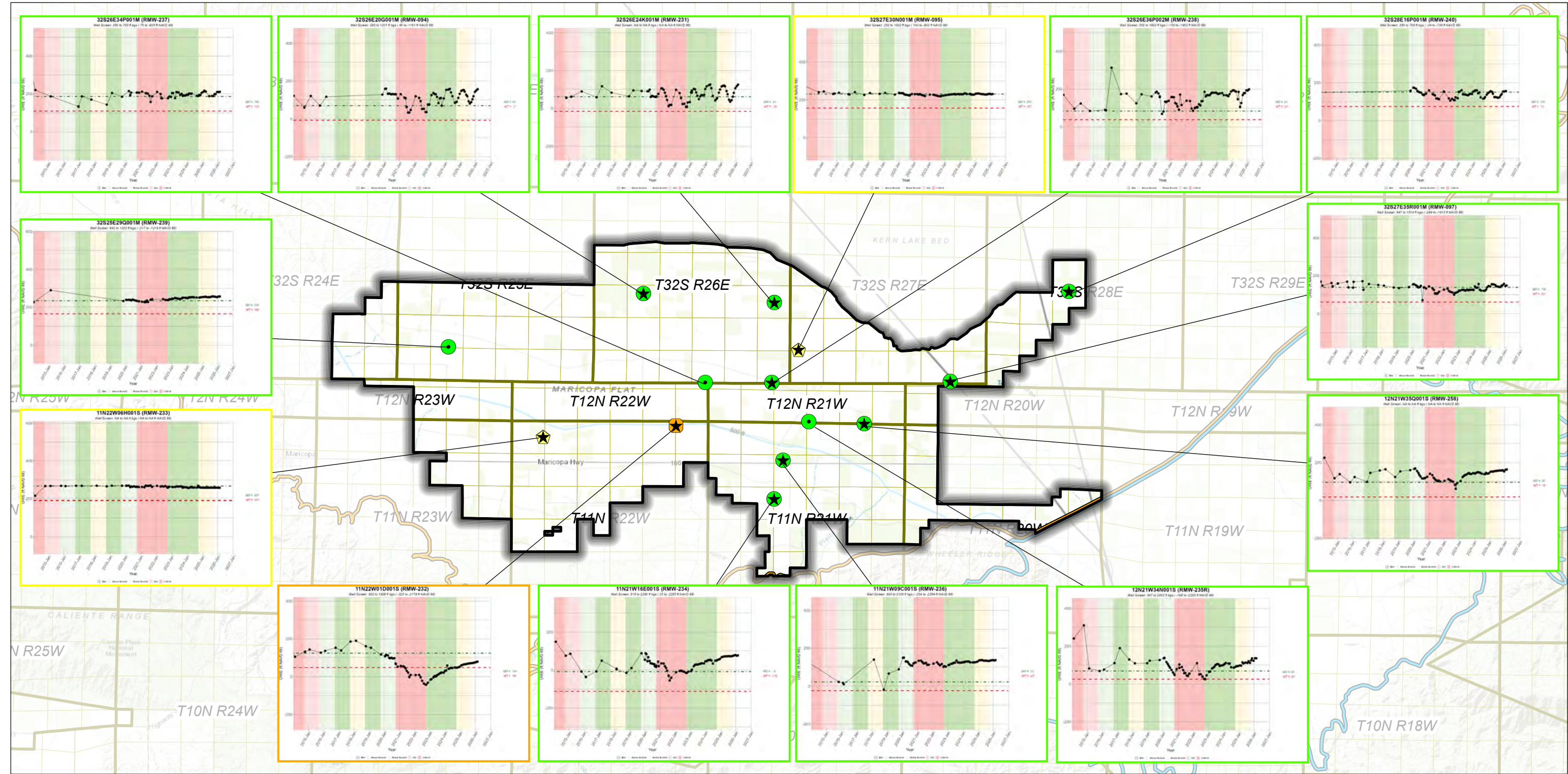
Wheeler Ridge-Maricopa GSA

South of Kern River
Kern County, California
February 2026
C20055.00



Figure 4

INTERIM FIGURE - FOR INFORMATIONAL PURPOSES ONLY



Legend

Representative Monitoring Well and Status as of February 2026

- Water Level Above MO (11 or 79%)
- ◆ Water Level Between MO and MT but closer to MO (2 or 14%)
- Water Level Between MO and MT but closer to MT (1 or 7%)
- ▲ Water Level Below MT (0)
- ⬡ No Water Level Measurement (0)

Wheeler Ridge-Maricopa GSA

Groundwater Subbasin

- Kern County (DWR 5-022.14)
- White Wolf (DWR 5-022.18)
- ★ Transducer Installed

Notes

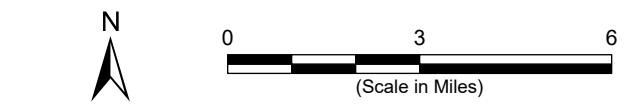
1. All locations are approximate.
2. Groundwater elevations are in feet mean sea level.
3. Status is based on the SMCs in the 2025 Kern County Subbasin Groundwater Sustainability Plan.
4. Undesirable Results are deemed to occur if (1) more than 15 drinking water wells within the Subbasin are reported as dry in any given year, or (2) groundwater levels in 25% or more RMWs are below their respective MT over a single year (two consecutive seasonal measurements).
5. All RMW status based on February 2026 measurements.

Sources

1. Basemap is ESRI's ArcGIS Online world topographic map, obtained 4 March 2026.
2. Groundwater elevation data provided by WRMWS.

Abbreviations

- DWR = California Department of Water Resources
- ft msl = feet above mean sea level
- GSA = Groundwater Sustainability Agency
- MO = Measurable Objective
- MT = Minimum Threshold
- RMW = Representative Monitoring Well
- SMCs = Sustainable Management Criteria
- WRMWS = Wheeler Ridge-Maricopa Water Storage District



Hydrographs in Representative Monitoring Wells (January 2015 - February 2026)
Wheeler Ridge-Maricopa Water Storage District
Kern County, CA
February 2026
C20055.00



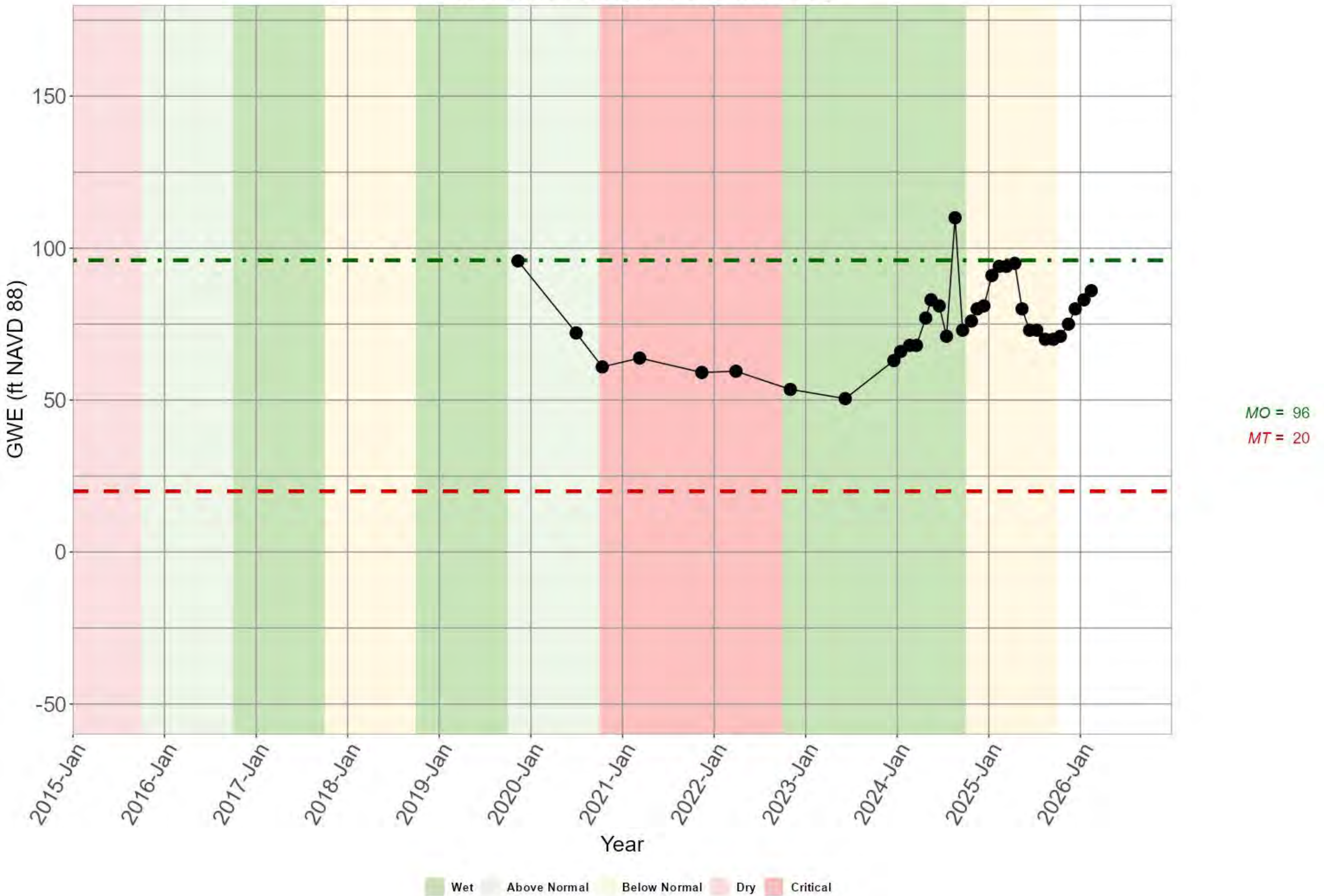
Figure 5

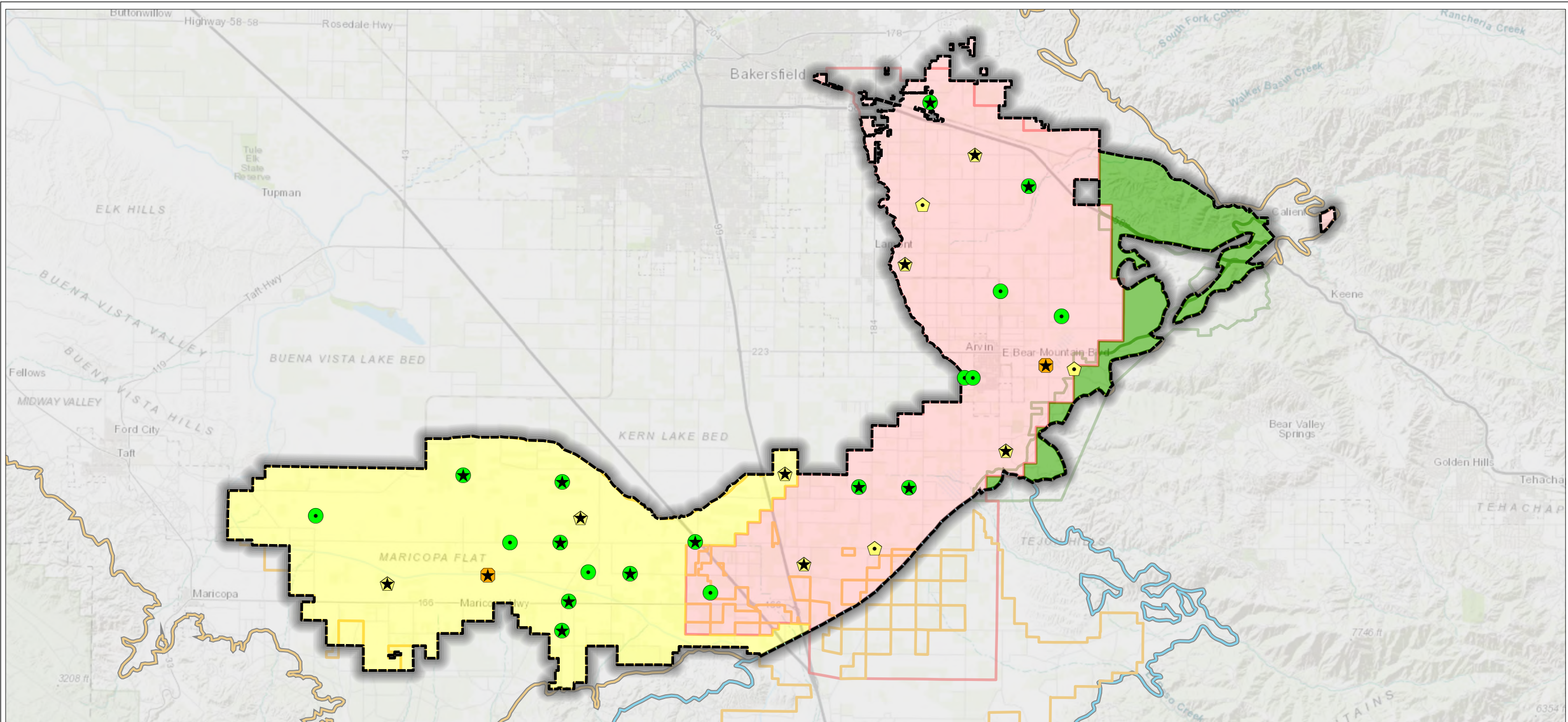
INTERIM FIGURE - FOR INFORMATIONAL PURPOSES ONLY

Path: X:\C20055.00\Map\2026\02\February 2026.aprx

Caratan Well (RMW-070)

Well Screen: NA to NA ft bgs (NA to NA ft NAVD 88)





Legend

Representative Monitoring Well and Status as of March 2026

- Water Level Above MO (19 or 65%)
- ⬠ Water Level Between MO and MT but closer to MO (10 or 32%)
- Water Level Between MO and MT but closer to MT (2 or 6%)
- ▲ Water Level Below MT (0)
- ⬠ No Water Level Measurement (0)

- South of Kern River GSAs
- Arvin GSA
- Wheeler Ridge-Maricopa GSA
- Tejon-Castac Water District GSA
- WRMWSA Service Area
- AEWSD Service Area
- TCWD Service Area

- Groundwater Subbasin**
- Kern County (DWR 5-022.14)
 - White Wolf (DWR 5-022.18)
 - ★ Transducer Installed

Abbreviations

- AEWSD = Arvin-Edison Water Storage District
- DWR = California Department of Water Resources
- GSA = Groundwater Sustainability Agency
- MO = Measurable Objective
- MT = Minimum Threshold
- RMW = Representative Monitoring Well
- SGMA = Sustainable Groundwater Management Act
- SMC = Sustainable Management Criteria
- TCWD = Tejon-Castac Water District
- UR = Undesirable Result
- WRMWSA = Wheeler Ridge-Maricopa Water Storage District

Notes

1. All locations are approximate.
2. Status is based on the SMCs in the 2025 Kern County Subbasin Groundwater Sustainability Plan
3. Undesirable Results are deemed to occur if (1) more than 15 drinking water wells within the Subbasin are reported as dry in any given year, or (2) groundwater levels in 25% or more RMWs are below their respective MT over a single year (two consecutive seasonal measurements).

Sources

1. Basemap is ESRI's ArcGIS Online world topographic map, obtained 9 April 2026.
2. GSA boundaries obtained from SGMA GSA Map Viewer portal, accessed 6 May 2022.
3. DWR groundwater basins are based on the boundaries defined in California's Groundwater Bulletin 118 - 2019 Update.

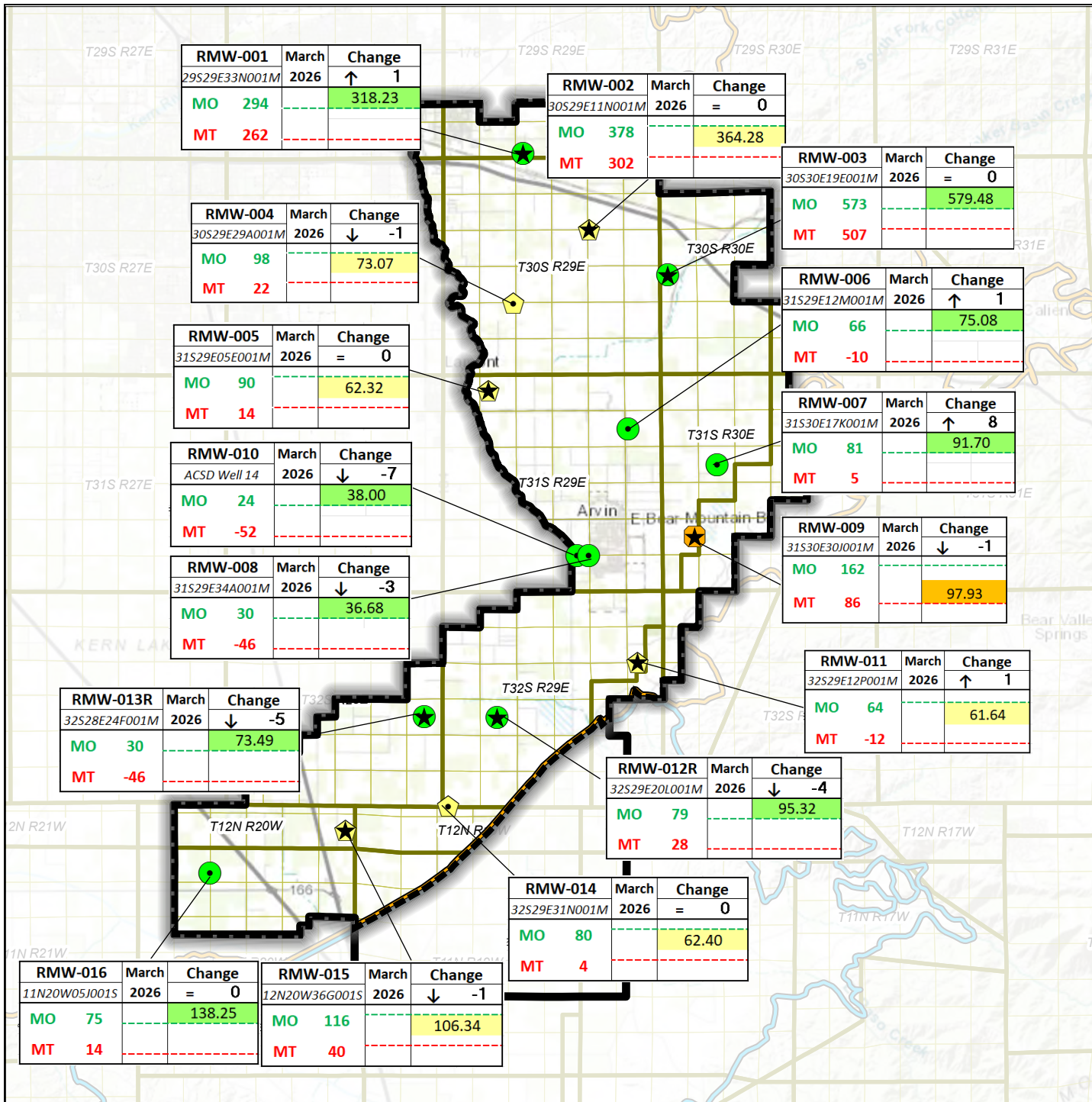


March 2026 Water Levels Relative to SMCs

South of Kern River GSAs
 Kern County, CA
 March 2026
 C20055.00
Figure 1



Path: X:\C20055.00\Maps\2026\03\March_2026.aprx



Legend

Representative Monitoring Well and Status as of March 2026

- Water Level Above MO (9 or 56%)
- ⬠ Water Level Between MO and MT but closer to MO (6 or 38%)
- ⬠ Water Level Between MO and MT but closer to MT (1 or 6%)
- ▲ Water Level Below MT (0)
- ⬠ No Water Level Measurement (0)
- ⬠ Arvin GSA
- ⬠ Arvin-Edison Water Storage District
- ⬠ Groundwater Subbasin
- ⬠ Kern County (DWR 5-022.14)
- ⬠ White Wolf (DWR 5-022.18)
- ★ Transducer Installed

Abbreviations

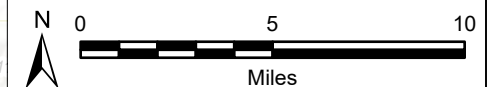
- ACSD = Arvin Community Services District
- DWR = California Department of Water Resources
- ft msl = feet above mean sea level
- GSA = Groundwater Sustainability Agency
- MO = Measurable Objective
- MT = Minimum Threshold
- RMW = Representative Monitoring Well
- SMC = Sustainable Management Criteria

Notes

1. All locations are approximate.
2. Groundwater elevations reported in units of ft msl.
3. All water levels collected during March 2026.
4. Arrow direction indicates water level change from previous month.
5. Status is based on the SMCs in the 2025 Kern County Subbasin Groundwater Sustainability Plan.
6. Undesirable Results are deemed to occur if (1) more than 15 drinking water wells within the Subbasin are reported as dry in any given year, or (2) groundwater levels in 25% or more RMWs are below their respective MT over a single year (two consecutive seasonal measurements).

Sources

1. Basemap is ESRI's ArcGIS Online world topographic map, obtained 9 April 2026.

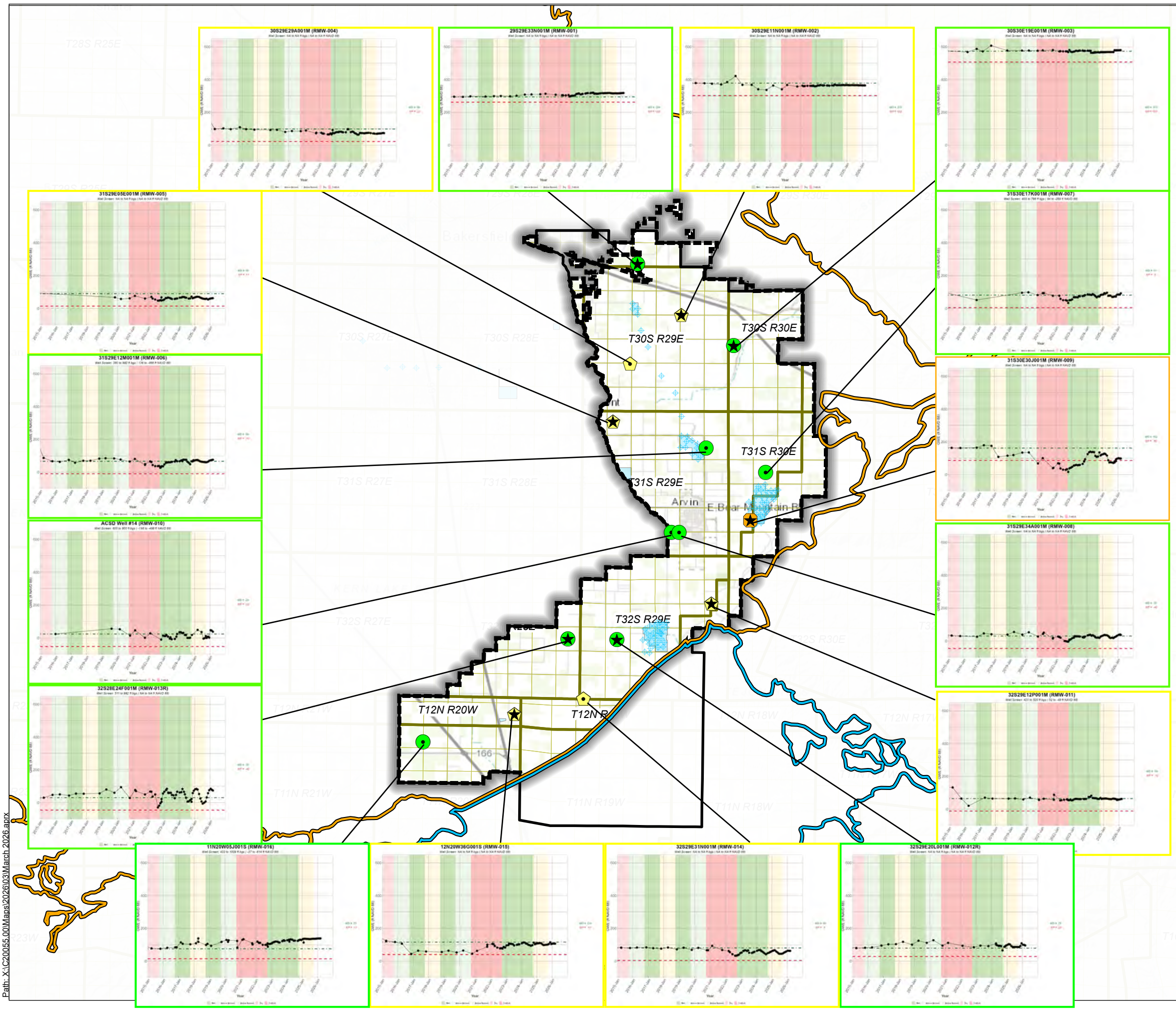


**Groundwater Levels Relative to SMCs
March 2026
Arvin GSA**

Arvin-Edison Water Storage District
Kern County, California
March 2026
B60064.10



Figure 2



Legend

Representative Monitoring Well and Status as of March 2026

- Water Level Above MO (9 or 56%)
- ⬠ Water Level Between MO and MT but closer to MO (6 or 38%)
- ⬠ Water Level Between MO and MT but closer to MT (1 or 6%)
- ▲ Water Level Below MT (0)
- ⬠ No Water Level Measurement (0)
- Arvin-Edison Water Storage District
- Arvin GSA

Groundwater Subbasin

- Kern County (DWR 5-022.14)
- White Wolf (DWR 5-022.18)
- ★ Transducer Installed

Abbreviations

AEWSD	= Arvin-Edison Water Storage District
DWR	= California Department of Water Resources
ft msl	= feet above mean sea level
GWE	= groundwater elevation
MO	= measurable objective
MT	= minimum threshold
RMW	= Representative Monitoring Well

Notes

- All locations are approximate.
- Groundwater elevations are in feet mean sea level.
- Status is based on the SMCs in the 2025 Kern County Subbasin Groundwater Sustainability Plan.
- Undesirable Results are deemed to occur if (1) more than 15 drinking water wells within the Subbasin are reported as dry in any given year, or (2) groundwater levels in 25% or more RMWs are below their respective MT over a single year (two consecutive seasonal measurements).
- All RMW status based on March 2026 measurements.

Sources

- Basemap is ESRI's ArcGIS Online world topographic map, obtained 9 April 2026.
- Water level information obtained from AEWSD.

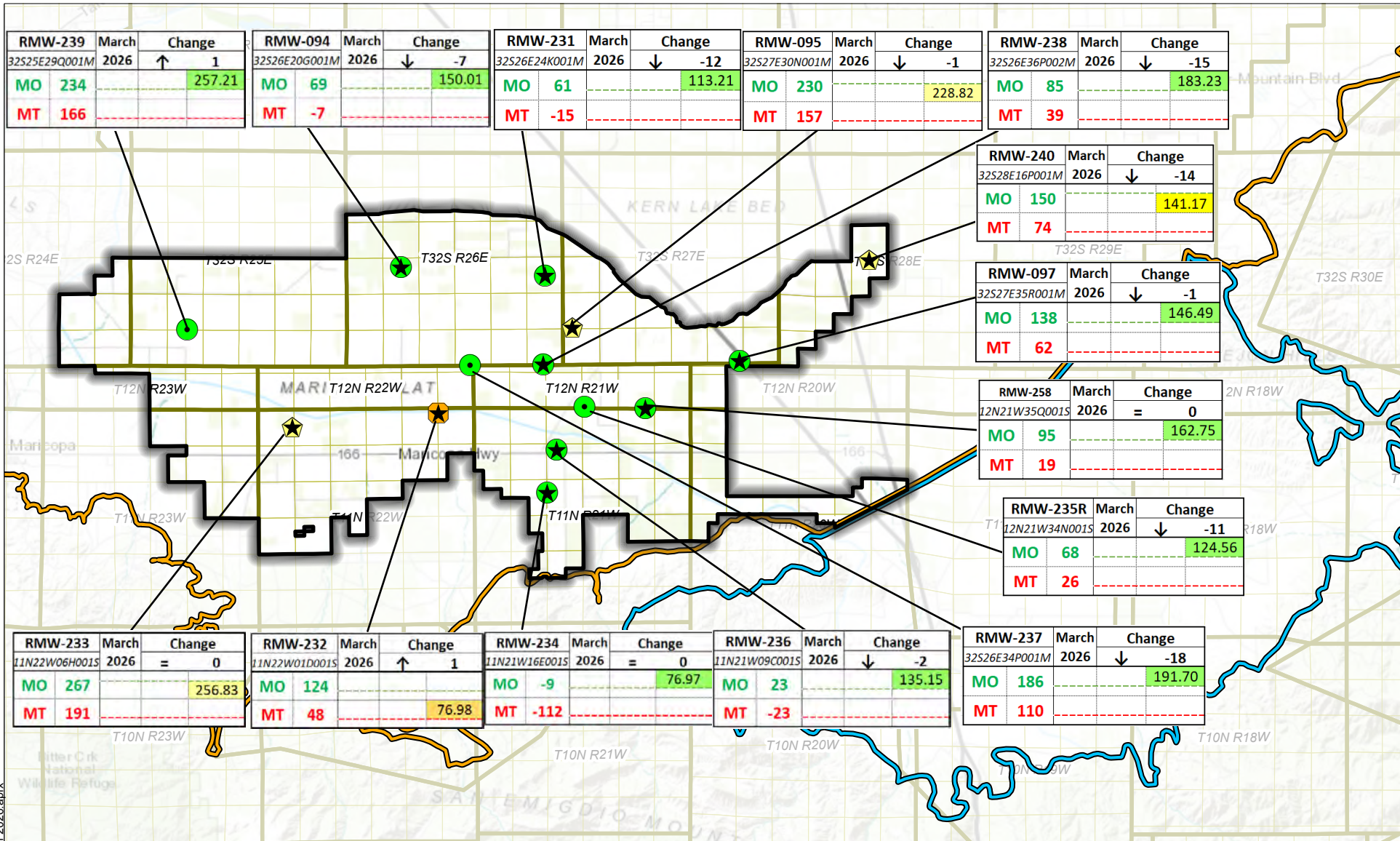
DRAFT

Hydrographs in Representative Monitoring Wells (January 2015 - March 2026)

Arvin-Edison Water Storage District
Kern County, CA
March 2026
C20055.01
Figure 3

eki environment & water

Path: X:\C20055_001\Maps\2026\03\March_2026.aprx



Path: X:\C20055_00\Maps\2026\03\March_2026.aprx

Legend

Representative Monitoring Well and Status as of March 2026

- Water Level Above MO (10 or 72%)
- Water Level Between MO and MT but closer to MO (3 or 21%)
- Water Level Between MO and MT but closer to MT (1 or 7%)
- ▲ Water Level Below MT (0)
- No Water Level Measurement (0)

Groundwater Subbasin

- Kern County (DWR 5-022.14)
- White Wolf (DWR 5-022.18)
- Wheeler Ridge-Maricopa GSA
- ★ Transducer Installed

Notes

1. All locations are approximate.
2. Groundwater elevations reported in units of ft msl.
3. All water levels collected during March 2026.
4. Arrow direction indicates water level change from previous month.
5. Status is based on the SMCs in the 2025 Kern County Subbasin Groundwater Sustainability Plan.
6. Undesirable Results are deemed to occur if (1) more than 15 drinking water wells within the Subbasin are reported as dry in any given year, or (2) groundwater levels in 25% or more RMWs are below their respective MT over a single year (two consecutive seasonal measurements).

Sources

1. Basemap is ESRI's ArcGIS Online world topographic map, obtained 9 April 2026.

Abbreviations

- DWR = California Department of Water Resources
- ft msl = feet above mean sea level
- GSA = Groundwater Sustainability Agency
- MO = Measurable Objective
- MT = Minimum Threshold
- SMC = Sustainable Management Criteria



(Scale in Miles)

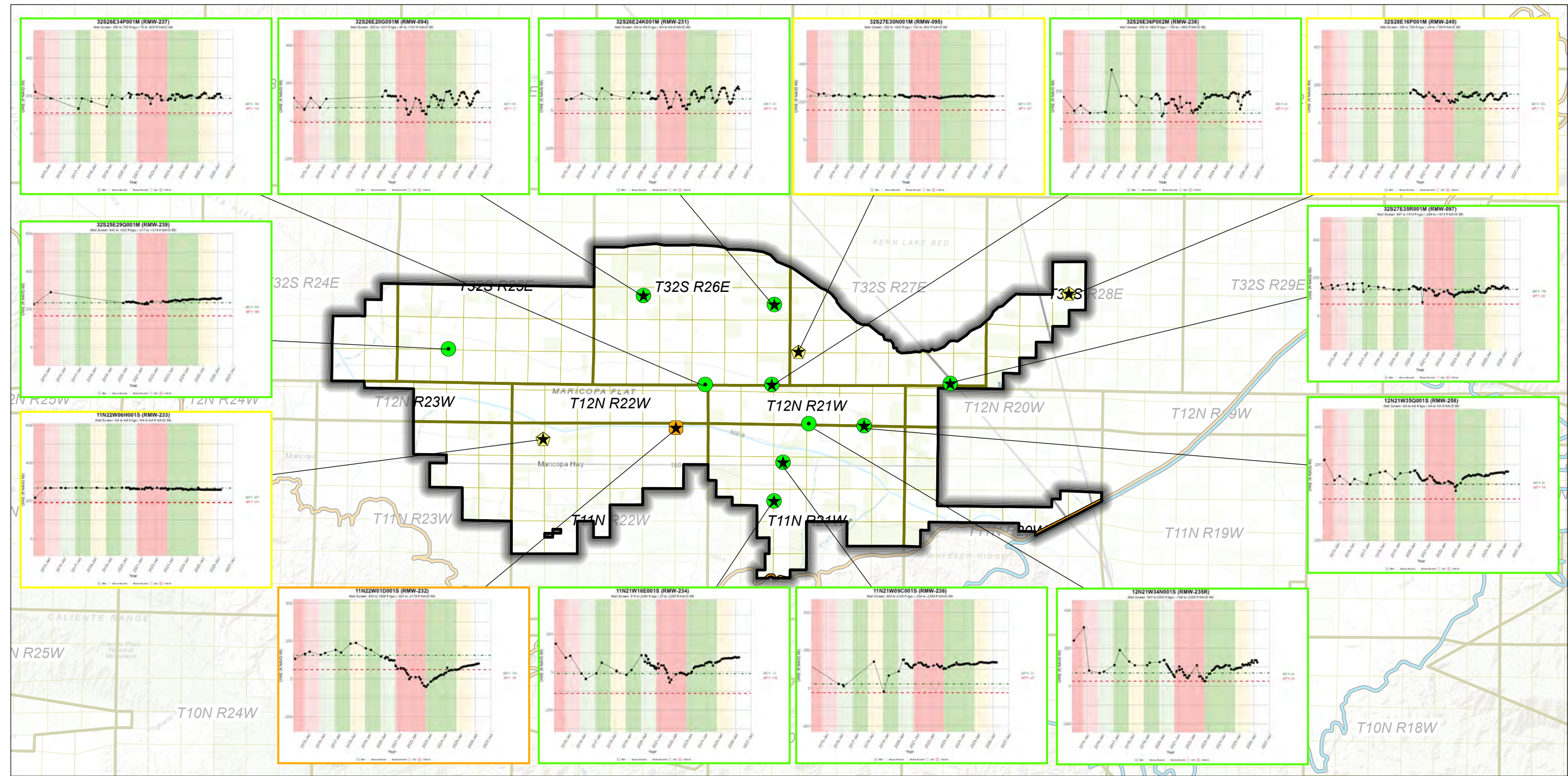
**Groundwater Levels Relative to SMCs
March 2026**

Wheeler Ridge-Maricopa GSA

South of Kern River
Kern County, California
March 2026
C20055.00



Figure 4



Legend

Representative Monitoring Well and Status as of March 2026

- Water Level Above MO (10 or 72%)
- Water Level Between MO and MT but closer to MO (3 or 21%)
- Water Level Between MO and MT but closer to MT (1 or 7%)
- ▲ Water Level Below MT (0)
- No Water Level Measurement (0)

Wheeler Ridge-Maricopa GSA

- Groundwater Subbasin**
- Kern County (DWR 5-022.14)
 - White Wolf (DWR 5-022.18)

★ Transducer Installed

Notes

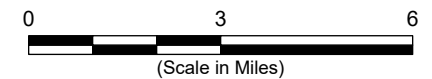
1. All locations are approximate.
2. Groundwater elevations are in feet mean sea level.
3. Status is based on the SMCs in the 2025 Kern County Subbasin Groundwater Sustainability Plan.
4. Undesirable Results are deemed to occur if (1) more than 15 drinking water wells within the Subbasin are reported as dry in any given year, or (2) groundwater levels in 25% or more RMWs are below their respective MT over a single year (two consecutive seasonal measurements).
5. All RMW status based on March 2026 measurements.

Sources

1. Basemap is ESRI's ArcGIS Online world topographic map, obtained 9 April 2026.
2. Groundwater elevation data provided by WRMWS.

Abbreviations

- DWR = California Department of Water Resources
- ft msl = feet above mean sea level
- GSA = Groundwater Sustainability Agency
- MO = Measurable Objective
- MT = Minimum Threshold
- RMW = Representative Monitoring Well
- SMCs = Sustainable Management Criteria
- WRMWS = Wheeler Ridge-Maricopa Water Storage District



Hydrographs in Representative Monitoring Wells (January 2015 - March 2026)

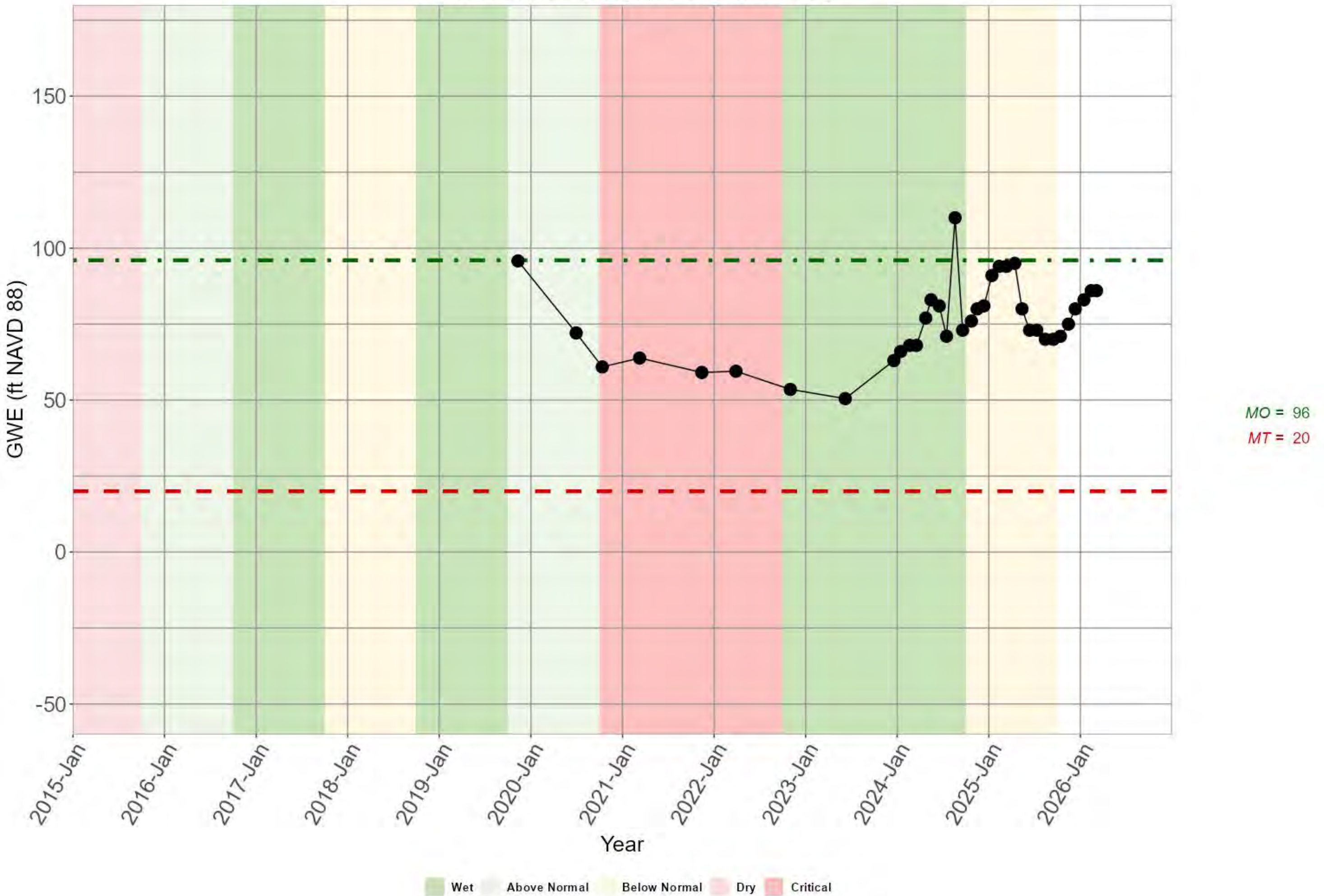
Wheeler Ridge-Maricopa Water Storage District
Kern County, CA
March 2026
C20055.00

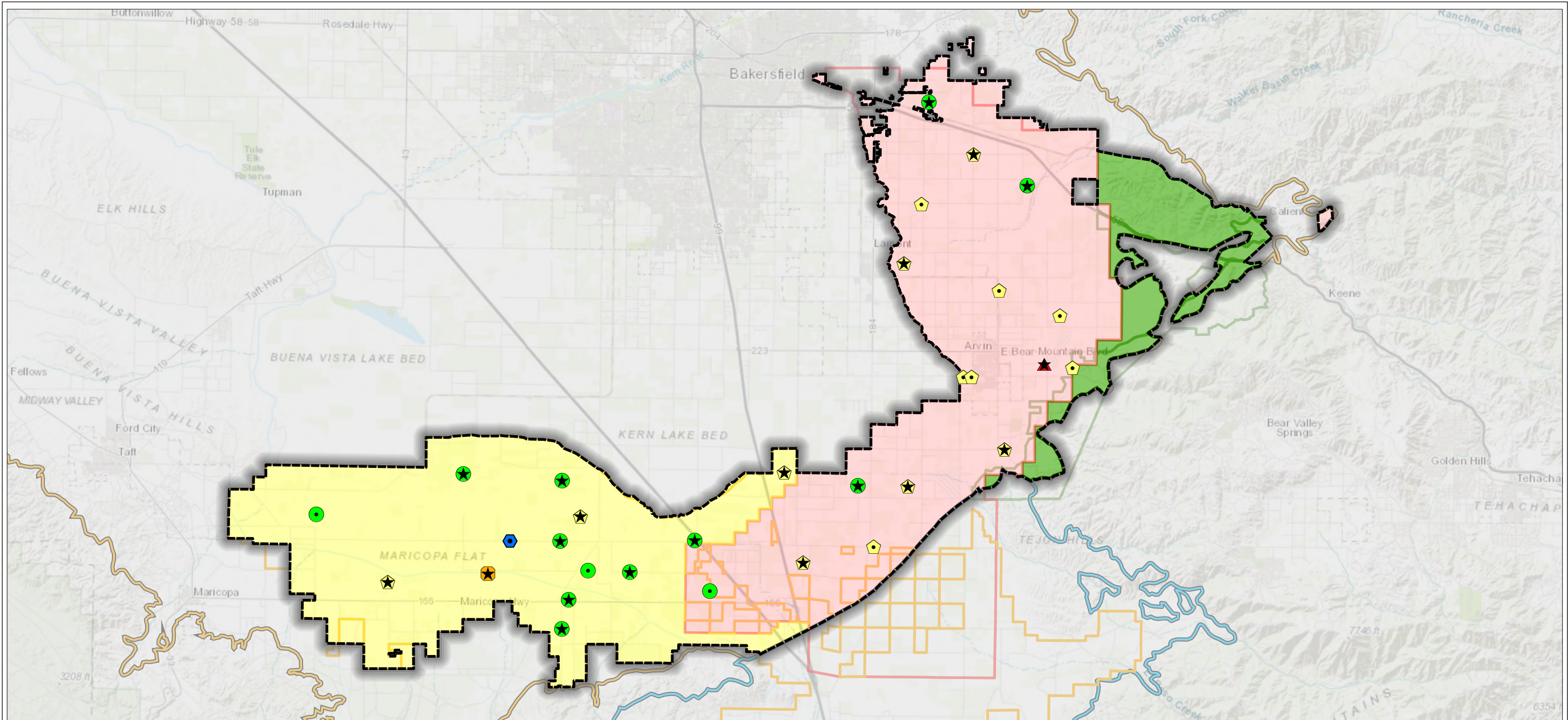


Figure 5

Caratan Well (RMW-070)

Well Screen: NA to NA ft bgs (NA to NA ft NAVD 88)





Legend

Representative Monitoring Well and Status as of April 2026

- Water Level Above MO (13 or 42%)
- ⬠ Water Level Between MO and MT but closer to MO (15 or 48%)
- Water Level Between MO and MT but closer to MT (1 or 3%)
- ▲ Water Level Below MT (1 or 3%)
- ⬠ No Water Level Measurement (1 or 3%)

- South of Kern River GSAs
- Arvin GSA
- Wheeler Ridge-Maricopa GSA
- Tejon-Castac Water District GSA
- WRMWSD Service Area
- AEWSD Service Area
- TCWD Service Area

- Groundwater Subbasin**
- Kern County (DWR 5-022.14)
 - White Wolf (DWR 5-022.18)
 - ★ Transducer Installed

Abbreviations

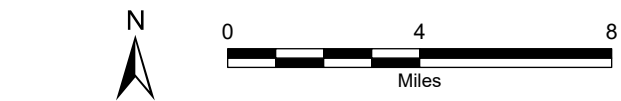
- AEWSD = Arvin-Edison Water Storage District
- DWR = California Department of Water Resources
- GSA = Groundwater Sustainability Agency
- MO = Measurable Objective
- MT = Minimum Threshold
- RMW = Representative Monitoring Well
- SGMA = Sustainable Groundwater Management Act
- SMC = Sustainable Management Criteria
- TCWD = Tejon-Castac Water District
- UR = Undesirable Result
- WRMWSW = Wheeler Ridge-Maricopa Water Storage District

Notes

1. All locations are approximate.
2. Status is based on the SMCs in the 2025 Kern County Subbasin Groundwater Sustainability Plan
3. Undesirable Results are deemed to occur if (1) more than 15 drinking water wells within the Subbasin are reported as dry in any given year, or (2) groundwater levels in 25% or more RMWs are below their respective MT over a single year (two consecutive seasonal measurements).

Sources

1. Basemap is ESRI's ArcGIS Online world topographic map, obtained 7 May 2026.
2. GSA boundaries obtained from SGMA GSA Map Viewer portal, accessed 6 May 2022.
3. DWR groundwater basins are based on the boundaries defined in California's Groundwater Bulletin 118 - 2019 Update.



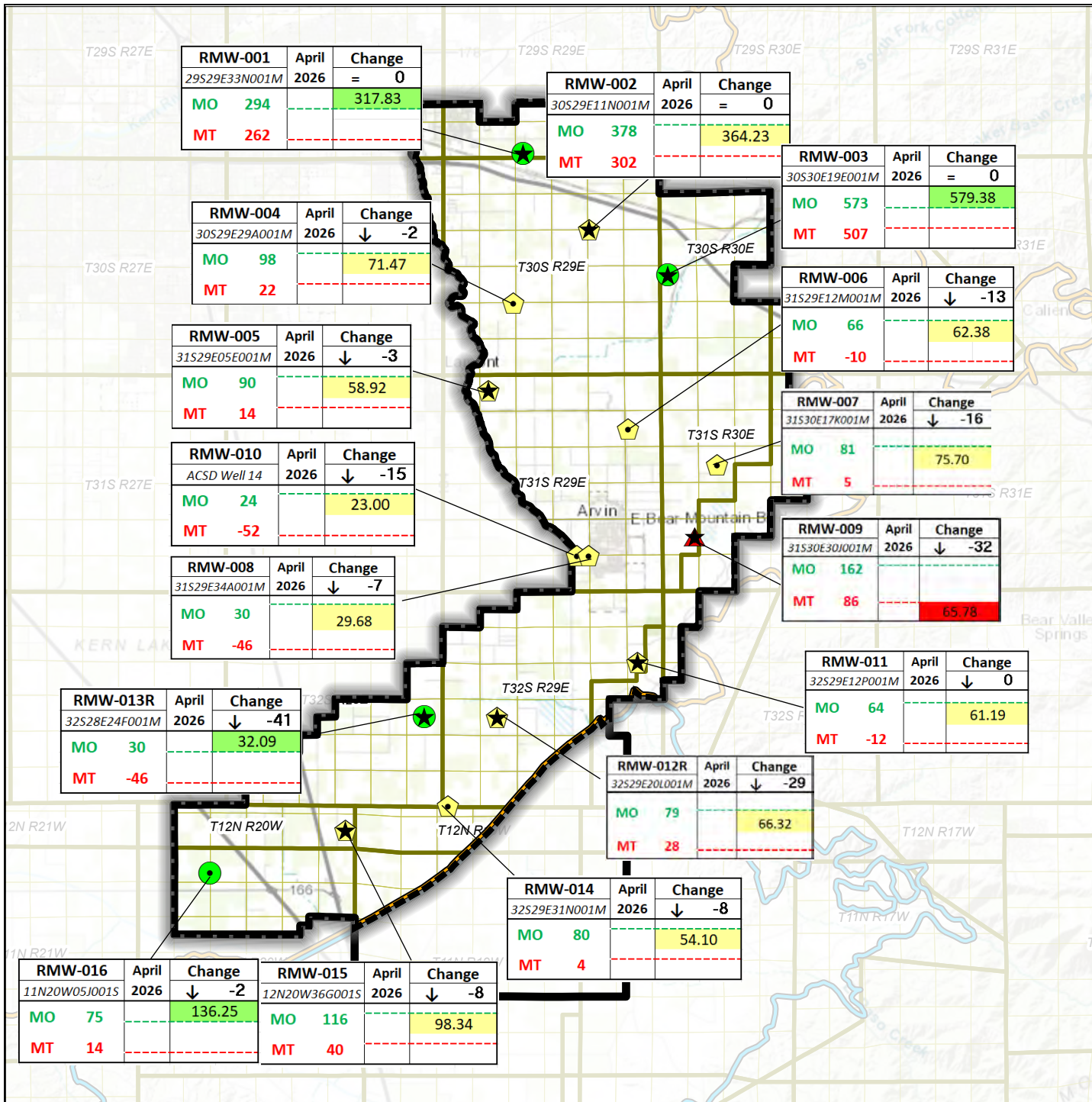
April 2026 Water Levels Relative to SMCs

South of Kern River GSAs
 Kern County, CA
 April 2026
 C20055.00



Figure 1

Path: X:\C20055.00\Maps\2026\04\April_2026.aprx



Legend

Representative Monitoring Well and Status as of April 2026

- Water Level Above MO (4 or 25%)
- ⬠ Water Level Between MO and MT but closer to MO (11 or 69%)
- ⬠ Water Level Between MO and MT but closer to MT (0)
- ▲ Water Level Below MT (1 or 6%)
- ⬠ No Water Level Measurement (0)
- Arvin GSA
- Arvin-Edison Water Storage District
- Groundwater Subbasin**
- Kern County (DWR 5-022.14)
- White Wolf (DWR 5-022.18)
- ★ Transducer Installed

Abbreviations

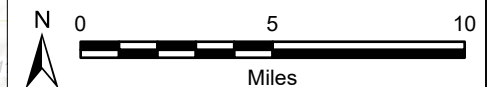
- ACSD = Arvin Community Services District
- DWR = California Department of Water Resources
- ft msl = feet above mean sea level
- GSA = Groundwater Sustainability Agency
- MO = Measurable Objective
- MT = Minimum Threshold
- RMW = Representative Monitoring Well
- SMC = Sustainable Management Criteria

Notes

1. All locations are approximate.
2. Groundwater elevations reported in units of ft msl.
3. All water levels collected during April 2026.
4. Arrow direction indicates water level change from previous month.
5. Status is based on the SMCs in the 2025 Kern County Subbasin Groundwater Sustainability Plan.
6. Undesirable Results are deemed to occur if (1) more than 15 drinking water wells within the Subbasin are reported as dry in any given year, or (2) groundwater levels in 25% or more RMWs are below their respective MT over a single year (two consecutive seasonal measurements).

Sources

1. Basemap is ESRI's ArcGIS Online world topographic map, obtained 7 May 2026.

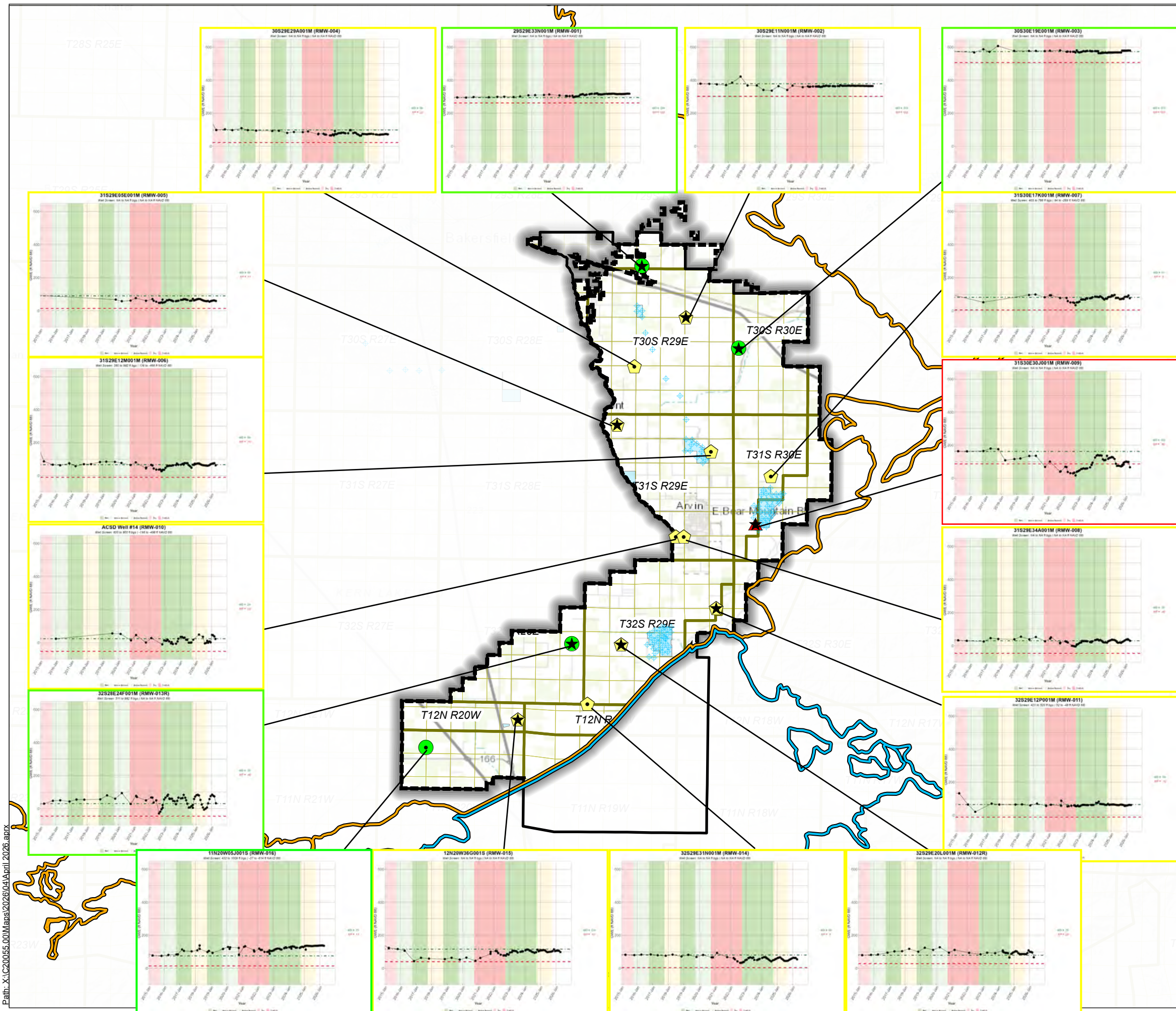


**Groundwater Levels Relative to SMCs
April 2026
Arvin GSA**

Arvin-Edison Water Storage District
Kern County, California
April 2026
B60064.10



Figure 2



Legend

Representative Monitoring Well and Status as of April 2026

- Water Level Above MO (4 or 25%)
- ⬠ Water Level Between MO and MT but closer to MO (11 or 69%)
- ⬠ Water Level Between MO and MT but closer to MT (0)
- ▲ Water Level Below MT (1 or 6%)
- ⬠ No Water Level Measurement (0)
- Arvin-Edison Water Storage District
- Arvin GSA

Groundwater Subbasin

- Kern County (DWR 5-022.14)
- White Wolf (DWR 5-022.18)
- ★ Transducer Installed

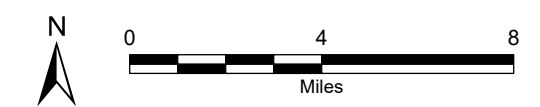
Abbreviations

AEWSD = Arvin-Edison Water Storage District
 DWR = California Department of Water Resources
 ft msl = feet above mean sea level
 GWE = groundwater elevation
 MO = measurable objective
 MT = minimum threshold
 RMW = Representative Monitoring Well

- Notes**
1. All locations are approximate.
 2. Groundwater elevations are in feet mean sea level.
 3. Status is based on the SMCs in the 2025 Kern County Subbasin Groundwater Sustainability Plan.
 4. Undesirable Results are deemed to occur if (1) more than 15 drinking water wells within the Subbasin are reported as dry in any given year, or (2) groundwater levels in 25% or more RMWs are below their respective MT over a single year (two consecutive seasonal measurements).
 5. All RMW status based on April 2026 measurements.

Sources

1. Basemap is ESRI's ArcGIS Online world topographic map, obtained 7 May 2026.
2. Water level information obtained from AEWSD.



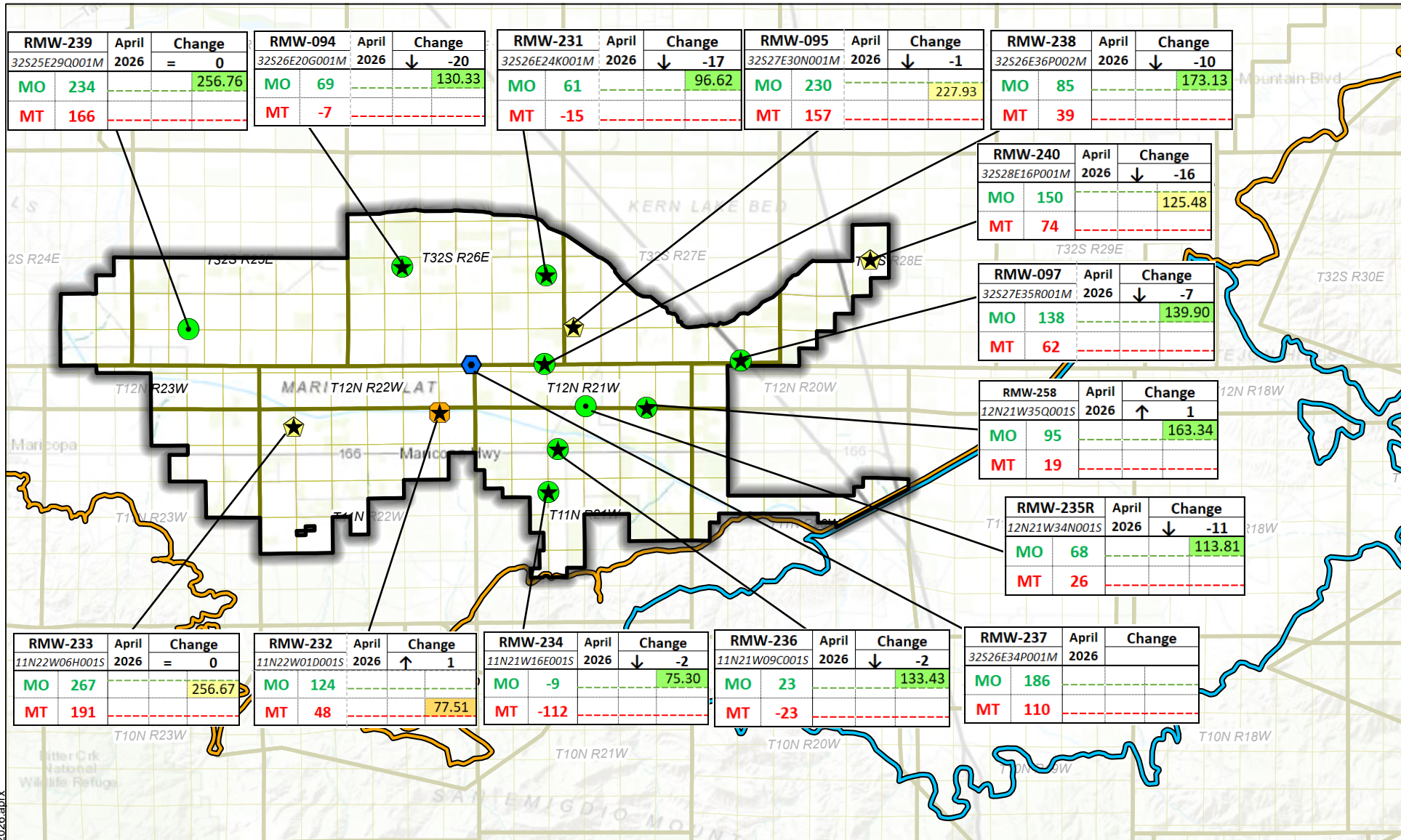
DRAFT

Hydrographs in Representative Monitoring Wells (January 2015 - April 2026)

Arvin-Edison Water Storage District
 Kern County, CA
 April 2026
 C20055.01
Figure 3

eki environment & water

Path: X:\C20055_001\Maps\2026\04\April_2026.aprx



Legend

Representative Monitoring Well and Status as of April 2026

- Water Level Above MO (9 or 65%)
- Water Level Between MO and MT but closer to MO (3 or 21%)
- Water Level Between MO and MT but closer to MT (1 or 7%)
- ▲ Water Level Below MT (0)
- No Water Level Measurement (1 or 7%)

Groundwater Subbasin

- Kern County (DWR 5-022.14)
- White Wolf (DWR 5-022.18)
- Wheeler Ridge-Maricopa GSA

Transducer Installed

- ★

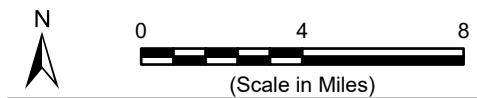
- Notes**
1. All locations are approximate.
 2. Groundwater elevations reported in units of ft msl.
 3. All water levels collected during April 2026.
 4. Arrow direction indicates water level change from previous month.
 5. Status is based on the SMCs in the 2025 Kern County Subbasin Groundwater Sustainability Plan.
 6. Undesirable Results are deemed to occur if (1) more than 15 drinking water wells within the Subbasin are reported as dry in any given year, or (2) groundwater levels in 25% or more RMWs are below their respective MT over a single year (two consecutive seasonal measurements).

Sources

1. Basemap is ESRI's ArcGIS Online world topographic map, obtained 7 May 2026.

Abbreviations

DWR	= California Department of Water Resources
ft msl	= feet above mean sea level
GSA	= Groundwater Sustainability Agency
MO	= Measurable Objective
MT	= Minimum Threshold
SMC	= Sustainable Management Criteria

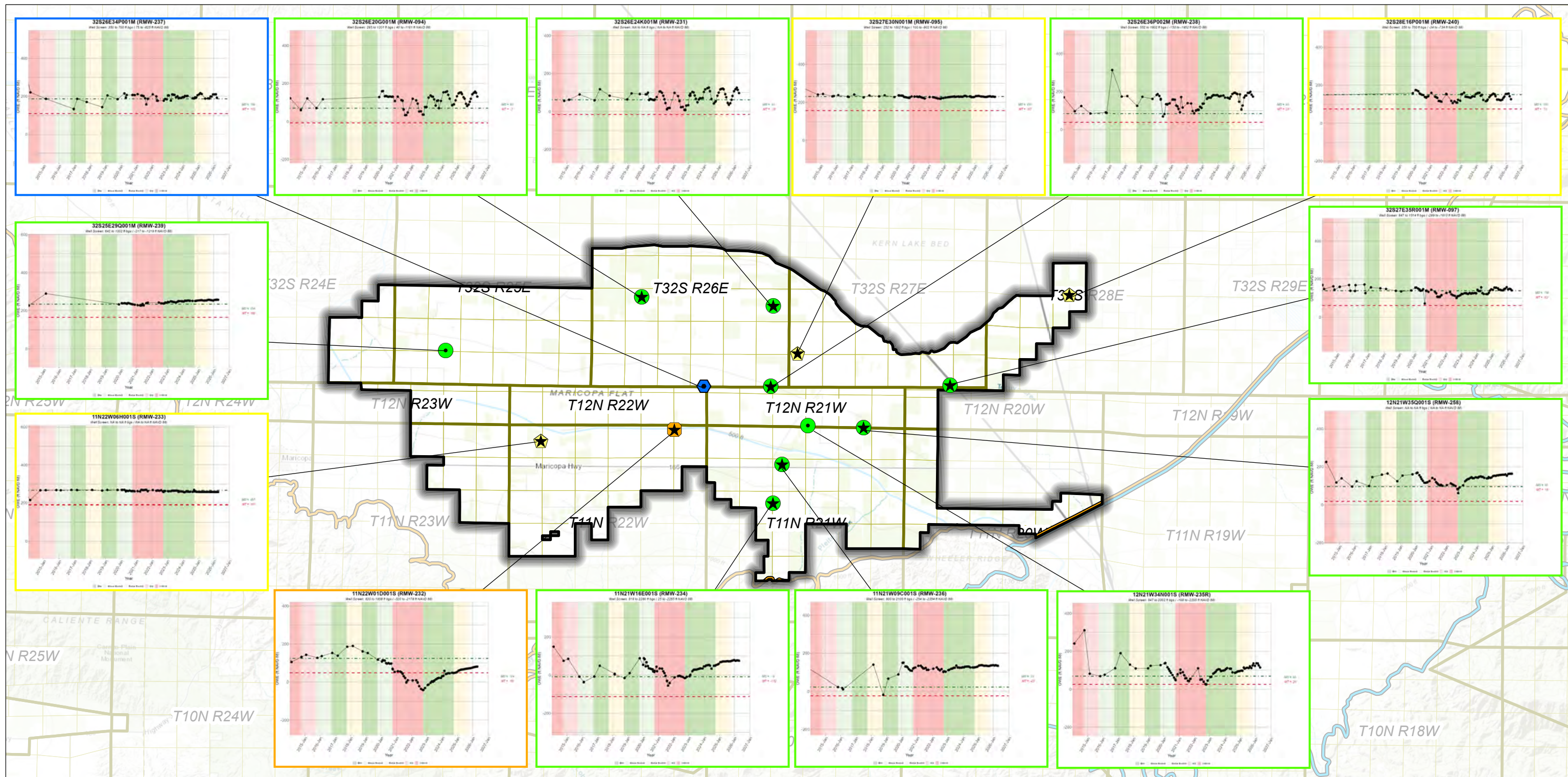


**Groundwater Levels Relative to SMCs
April 2026**

Wheeler Ridge-Maricopa GSA
 South of Kern River
 Kern County, California
 April 2026
 C20055.00

Figure 4

Path: X:\C20055.00\Maps\2026\04\April_2026.aprx



Legend

Representative Monitoring Well and Status as of April 2026

- Water Level Above MO (9 or 72%)
- Water Level Between MO and MT but closer to MO (3 or 21%)
- Water Level Between MO and MT but closer to MT (1 or 7%)
- ▲ Water Level Below MT (0)
- No Water Level Measurement (1 or 7%)

Wheeler Ridge-Maricopa GSA

- Groundwater Subbasin**
- Kern County (DWR 5-022.14)
 - White Wolf (DWR 5-022.18)

★ Transducer Installed

Notes

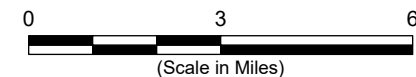
1. All locations are approximate.
2. Groundwater elevations are in feet mean sea level.
3. Status is based on the SMCs in the 2025 Kern County Subbasin Groundwater Sustainability Plan.
4. Undesirable Results are deemed to occur if (1) more than 15 drinking water wells within the Subbasin are reported as dry in any given year, or (2) groundwater levels in 25% or more RMWs are below their respective MT over a single year (two consecutive seasonal measurements).
5. All RMW status based on April 2026 measurements.

Sources

1. Basemap is ESRI's ArcGIS Online world topographic map, obtained 7 May 2026.
2. Groundwater elevation data provided by WRMWS.

Abbreviations

- DWR = California Department of Water Resources
- ft msl = feet above mean sea level
- GSA = Groundwater Sustainability Agency
- MO = Measurable Objective
- MT = Minimum Threshold
- RMW = Representative Monitoring Well
- SMCs = Sustainable Management Criteria
- WRMWS = Wheeler Ridge-Maricopa Water Storage District



Hydrographs in Representative Monitoring Wells (January 2015 - April 2026)

Wheeler Ridge-Maricopa Water Storage District

Kern County, CA

April 2026

C20055.00

Figure 5



Caratan Well (RMW-070)

Well Screen: NA to NA ft bgs (NA to NA ft NAVD 88)

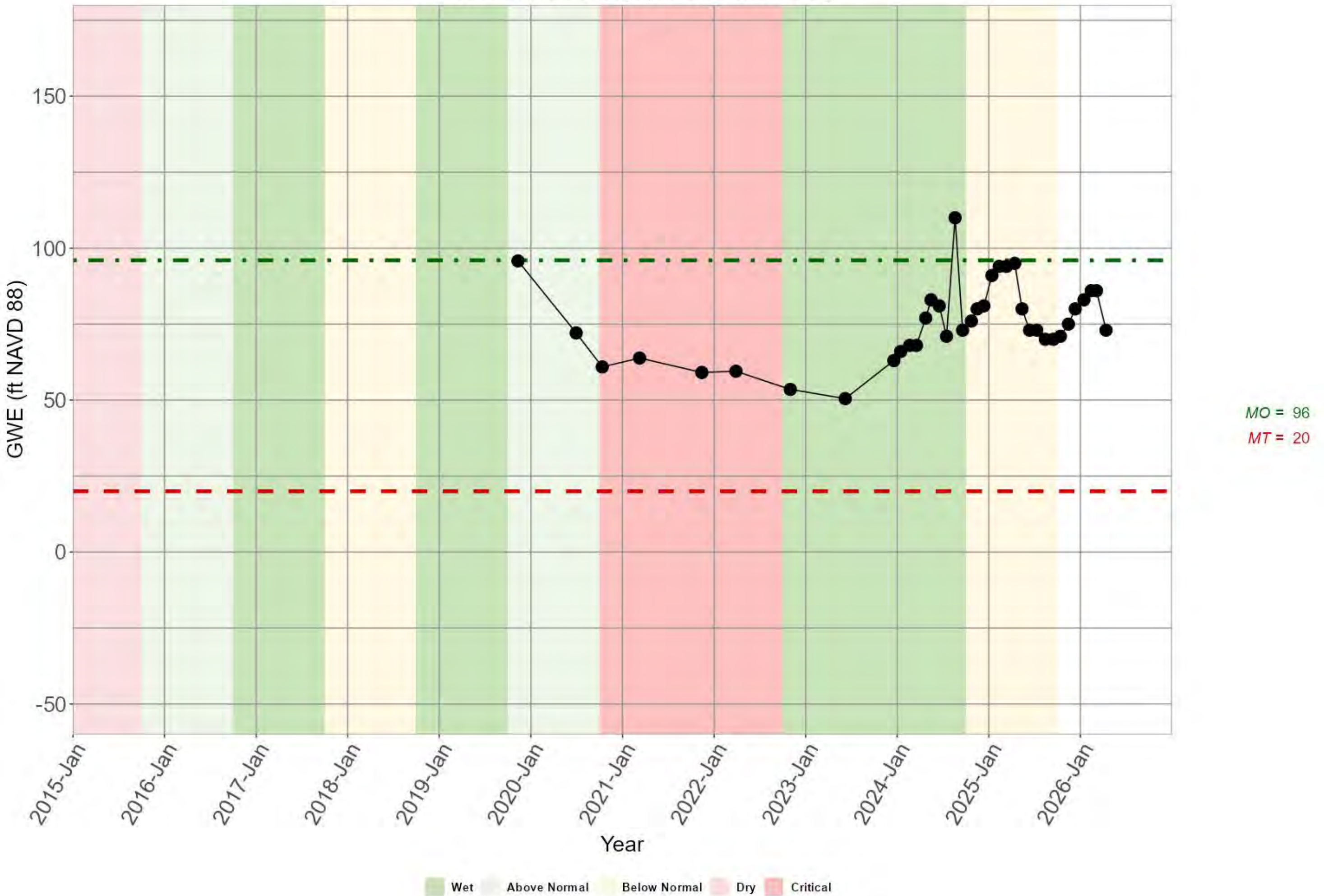


TABLE 1

Kern Subbasin Cost Share Agreement (26-02)

	<u>Date:</u>	<u>Amount:</u>
Base Agreement (26-02):	5/6/2026	\$232,743.00

Exhibit A - Subsidence Monitoring Program:

Aquilogic: (WDWA GSA)	4/1/26 - 12/31/26	\$79,000.00
Intera: (SWID GSA)	4/1/26 - 12/31/26	\$92,518.00
Todd GW: (Cawelo GSA)	4/1/26 - 12/31/26	\$52,400.00
		\$223,918.00

Exhibit B - WY25 Annual Rpt. Prep/Support Adjustment:

Todd GW: (KRGSA)	PMA Portal Update	\$8,825.00
		\$8,825.00
	Total:	\$232,743.00

Task Orders Available Upon Request

AGMT No. 26-02		\$ 232,743.00	
GSA Name	Developed Acreage		
		75.00%	120.45%
TCWDGSA	317	\$ 8,727.86	
OWDGSA	1,142	\$ 8,727.86	
PioneerGSA	1,462	\$ 8,727.86	
WKWDGSA	5,881	\$ 8,727.86	
EWMA	6,895	\$ 8,727.86	
KWBGSA	8,336	\$ 8,727.86	
KTWDGSA	10,041	\$ 8,727.86	
KNDLA	10,634	\$ 8,727.86	
HMWDGSA	18,565	\$ 8,727.86	
CWDGSA	38,975		\$ 14,017.48
BVGSA	39,902		\$ 14,017.48
RRBWSDGSA	41,449		\$ 14,017.48
SWIDGSA	44,270		\$ 14,017.48
SSJMUDGSA	56,973		\$ 14,017.48
NKWSDGSA	60,531		\$ 14,017.48
WRMGSA	62,186		\$ 14,017.48
Arvin GSA	88,891		\$ 14,017.48
WDWAGSA	113,856		\$ 14,017.48
SWSDGSA	139,857		\$ 14,017.48
KRGSA	190,253		\$ 14,017.48

\$ 78,550.76 \$ 154,192.24

\$ 232,743.00